

# SMART System Control

LCD  
Daily Operation and  
Pocket Programming Guide

August 2004

070-0724-00



## Table of Contents

Activating a Preset.....	1
Editing a Preset .....	2
Selecting Rooms, Presets, and Zones .....	3
Adjusting Lighting Levels.....	4
Adjusting Fade Times .....	5
Setting Preset Labels .....	6
System Configuration.....	8
Glossary.....	9

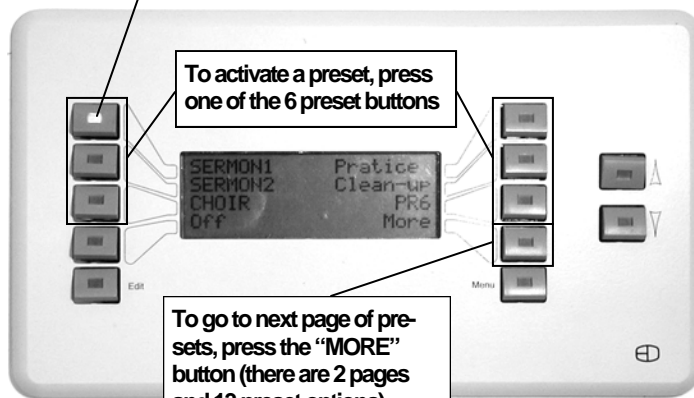
1675 NW Cornelius Pass Road  
Hillsboro OR 97124 USA  
(503) 645-5533 (800) 547-2690  
FAX: (503) 629-9877  
www.edionline.com



## Activating a Preset

LED indicates an active preset. A blinking LED means the preset is fading. To bypass the fade, press the button twice.

To activate a preset, press one of the 6 preset buttons



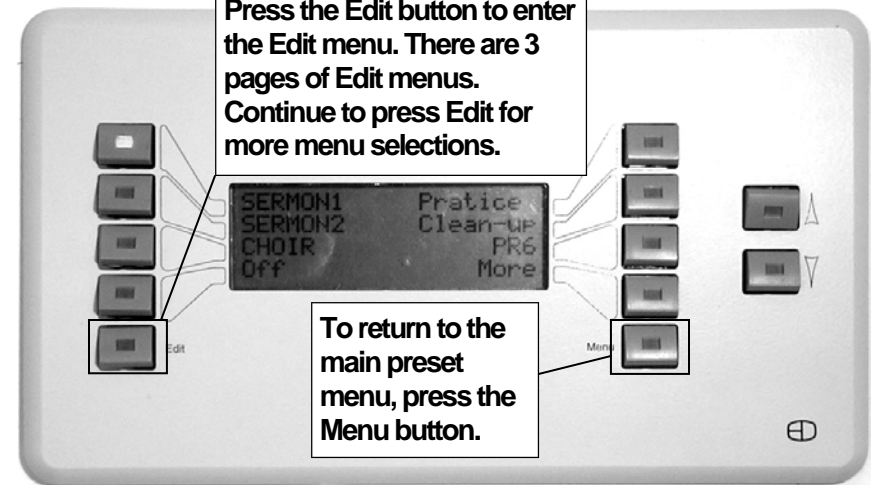
To go to next page of presets, press the "MORE" button (there are 2 pages and 13 preset options).

1

## Editing a Preset

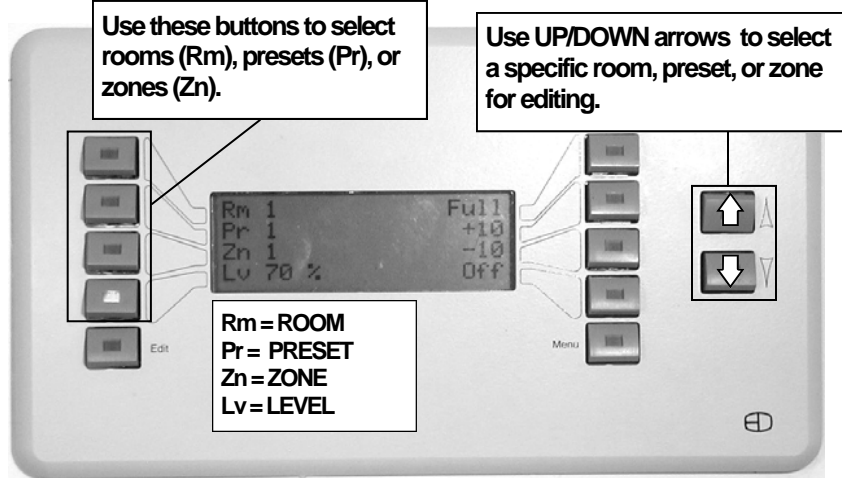
Press the Edit button to enter the Edit menu. There are 3 pages of Edit menus. Continue to press Edit for more menu selections.

To return to the main preset menu, press the Menu button.



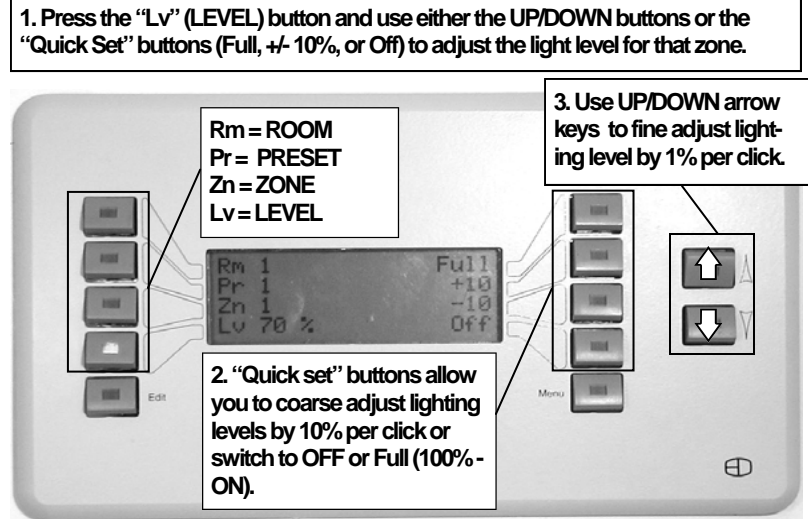
2

## Editing a Preset - Selecting Rooms, Presets, and Zones



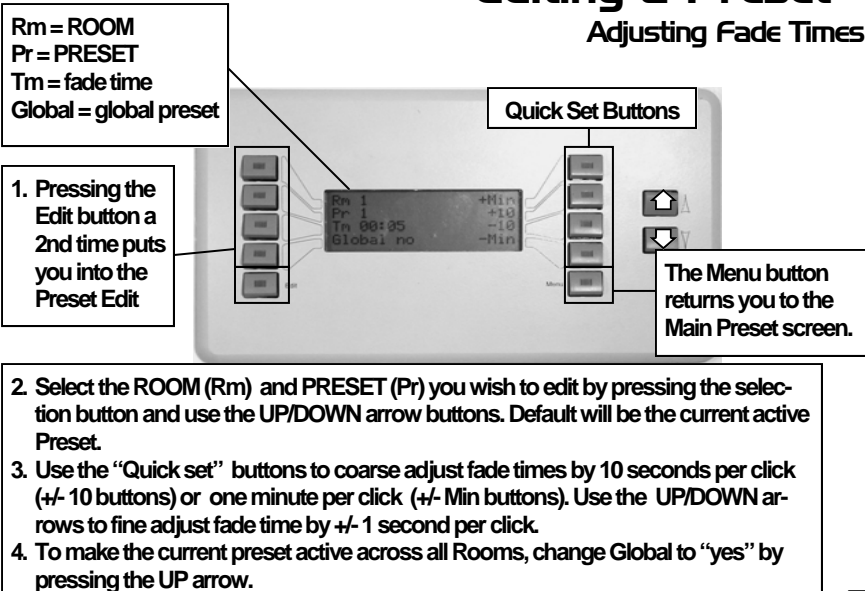
3

## Editing a Preset - Adjusting Lighting Levels



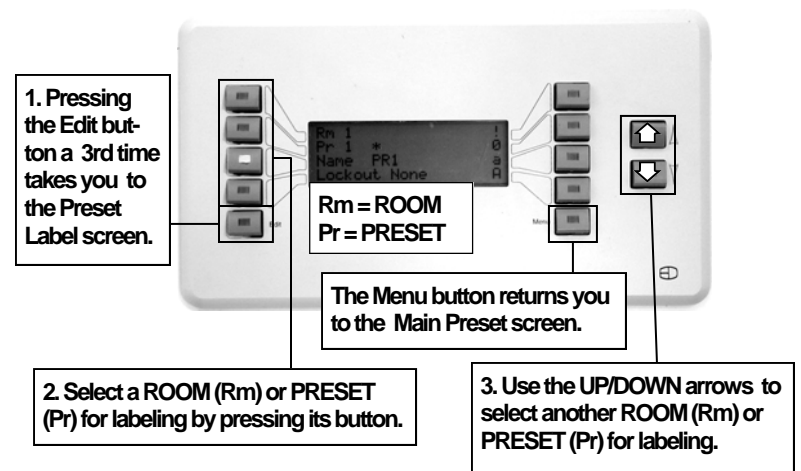
4

## Editing a Preset - Adjusting Fade Times



5

## Editing a Preset - Setting Preset Labels



6

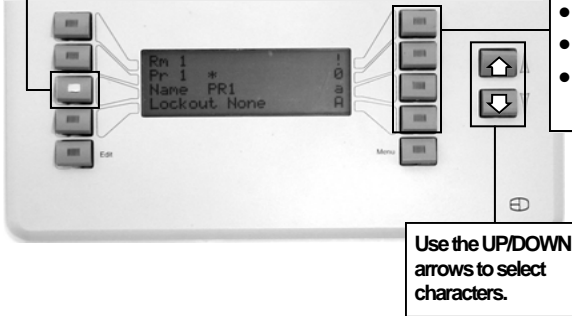
## Editing a Preset - Setting Preset Labels - *continued*

4. To label the preset, press the "Name" button. An asterisk (\*) will appear above the first letter. Using the UP/DOWN buttons, select the first letter.

5. Press the Name button again to move the "." to the next letter and so on until you have completed the label.

6. Use the "Quick set" buttons to select

- Symbols ("!")
- Numbers ("0")
- lower case text ("a")

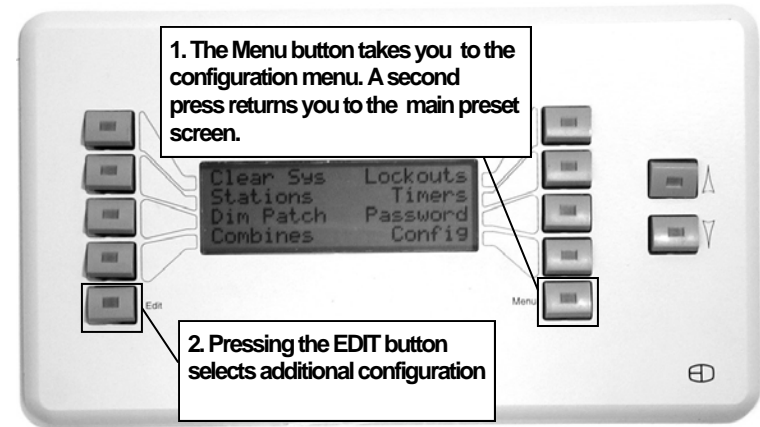


7

## System Configuration

1. The Menu button takes you to the configuration menu. A second press returns you to the main preset screen.

2. Pressing the EDIT button selects additional configuration



**WARNING!** Consult your SMART operations manual before modifying your system configuration.

8

- **Room-** A ROOM is an independent area of lighting control. The SMART can have up to 8 different rooms.
- **Zone-** A ZONE is a point of control within a room. For instance, all the down-lights circuits in a room may be assigned to one or more zones. The SMART can have up to 100 zones of control.
- **Preset or Scene-** A preset (also referred to as a SCENE) is a series of recorded zone levels. The SMART can have up to 13 scenes or presets in each room.
- **Level-** A level refers to how bright a particular zone is in a room. Levels are shown in a scale between 0% and 100%.
- **Full-** FULL is 100% output for a selected zone.
- **OFF-** OFF is 0% output for a selected zone
- **Global-** A preset assigned as a GLOBAL will be active across all rooms and zones when activated. For instance, you might designate a global preset that will put all rooms in a clean-up scene so that a janitor need only press activate a single preset for the whole facility.

G  
L  
O  
S  
S  
A  
R  
Y  
9